

# StyleGuard for Word

---

## Table of Contents

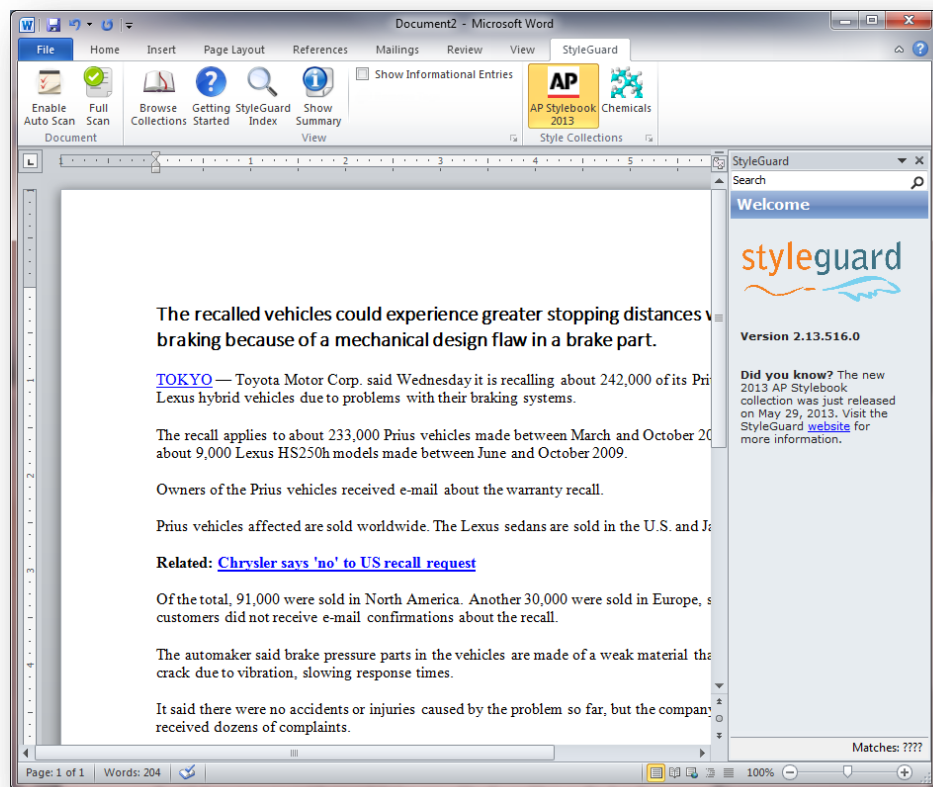
Introduction .....	2
Microsoft Office Compatibility.....	3
Installation .....	3
Verifying the StyleGuard for Word Installation .....	6
Activating a StyleGuard Style Collection .....	7
Features and Operations Guide .....	11
StyleGuard Options and Functionality .....	11
Scanning a Document .....	11
Using “Full Scan” .....	12
Reviewing Results of a StyleGuard Scan .....	12
View Panel.....	14
Browse Collection Button .....	15
Getting Started Button.....	16
StyleGuard Index Button.....	16
Show Summary Button .....	17
“Show Informational Entries” Scan Option Setting .....	18
Using the StyleGuard Task Pane .....	20
Features .....	21
Uninstalling StyleGuard for Word.....	22
Troubleshooting Installation Issues .....	23
Manually Enabling or Disabling StyleGuard for Word .....	24
Verifying that StyleGuard for Word is Enabled.....	26
Troubleshooting Tips While Enabling StyleGuard for Word Add-In .....	27
Getting Help and Support .....	27

## Introduction

StyleGuard is a powerful yet easy solution that integrates with Microsoft Word and provides automatic checking of the documents you are composing for AP style conformance. Using defined structure and rules, StyleGuard helps ensure the consistency of your writing style similar to Word's spelling and grammar checkers. It saves you the time of manually referring to the AP Stylebook and offers recommendations on items you might not have realized are covered by AP style.

No matter what you're writing in your document, you can rest assured that StyleGuard helps you stay on top of the current spelling, grammar, punctuation and usage guidelines from the journalist's bible.

StyleGuard includes current AP Stylebook guidance, with rules updated throughout the year to keep your writing covered by new additions and changes responding to news events and the evolution of the language.



StyleGuard for Word is a proofing tool that seamlessly integrates into the popular Microsoft Office word processing program. It interactively checks document content against thousands of rules based on the AP Stylebook and suggests fixes when necessary. It also displays the full text of a relevant AP style rule, so you are fully informed when you decide which recommended changes to accept or reject.

## Microsoft Office Compatibility

StyleGuard for Word is compatible with the following Microsoft Office versions:

- 1) Microsoft Word for Office 2007
- 2) Microsoft Word for Office 2010

The Add-In is not compatible with:

- 1) Versions of Microsoft Office prior to version 2007
- 2) Microsoft Office 365
- 3) Microsoft Office 2013
  - This version of office may be found pre-installed on computers shipping with the new Windows 8 operating systems.

## Installation

To begin the installation of StyleGuard for Word, click on the following URL to download the setup program:

**Setup Program:** <http://www.style-guard.com/download.aspx>

Select the product (Word for Windows) and click on the download button to download the software.

Click **Run** after the download is completed. (Note: you may need to first save the file to a convenient location like your desktop and then double-click to run the program that is saved on your desktop.)

The installation consists of the following steps:

- 1) It checks that all the prerequisites are installed on your computer. If the prerequisites are not present, they will be downloaded and installed. Once the prerequisites are present, the setup package will be downloaded.

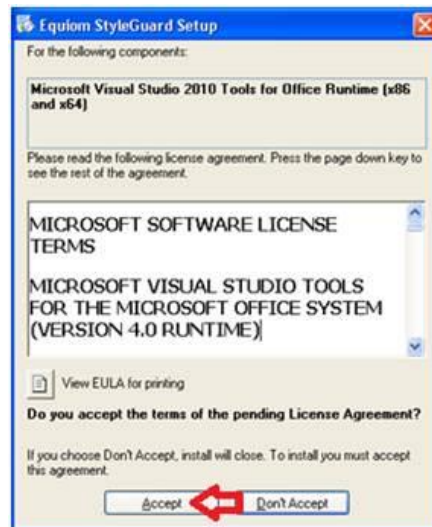
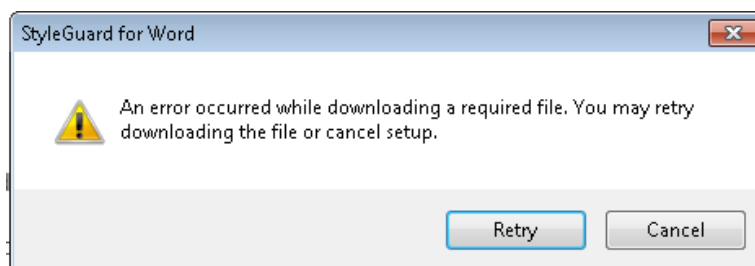


Figure: Installing the prerequisite Office Runtime

**Note:** Installing the prerequisites may require you to restart your computer. If this is required, restart your computer and then click on the link above to restart the installation process. If you experience problems installing the prerequisites, proceed to the section on “Troubleshooting Installation Issues.”

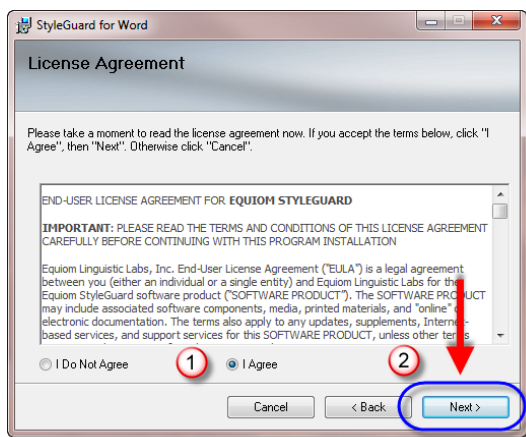
- 2) If you encounter the following error during installation, your anti-virus program or system setting may be blocking the download of the setup software. You can turn off the anti-virus program and run setup again, or click on the **Start** button and **Run** the rest of the setup directly from: <https://style-guard.com/download/StyleGuardWord10Setup.msi>



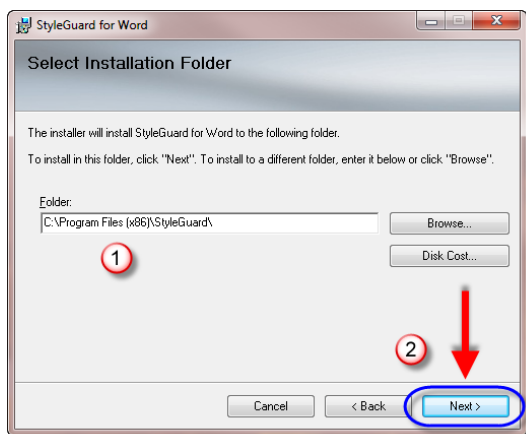
- 3) Once the setup package is started, click on the **Next** button to start the installation of StyleGuard for Word.



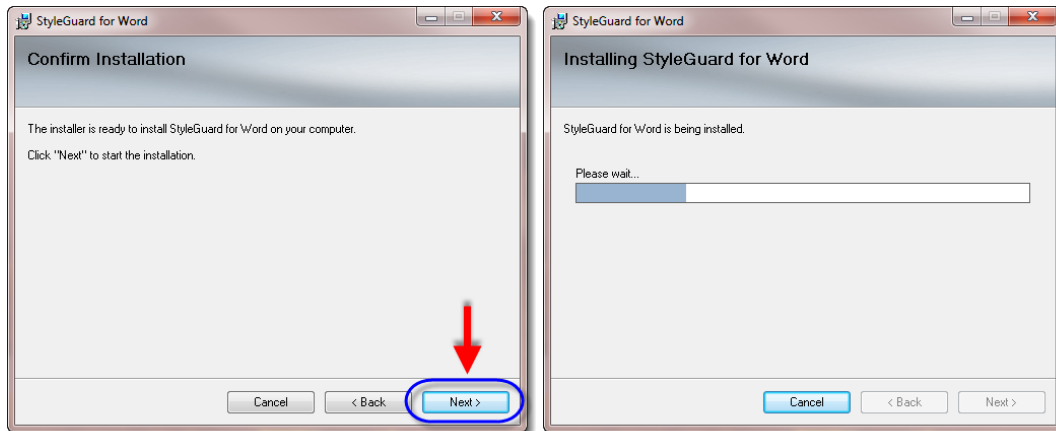
- 4) Select **I Agree** and click on the **Next** button to continue the installation after reviewing the license agreement.



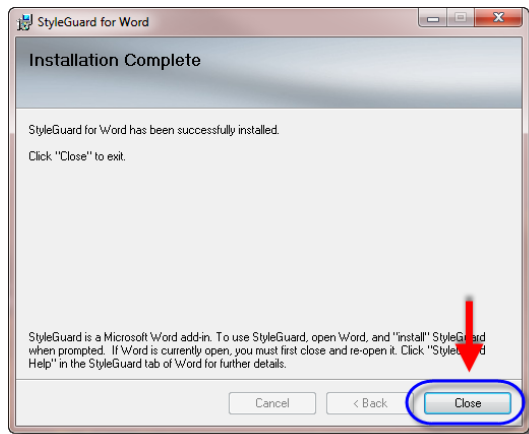
- 5) Click on the **Next** button to install StyleGuard at the default folder.



6) Confirm installation by clicking on the **Next** button.



7) Complete the installation by clicking the **Close** button.



## Verifying the StyleGuard for Word Installation

To view and verify that the installation of StyleGuard for Word was successful, launch Microsoft Word.

If StyleGuard for Word was successfully installed as a Word Add-In, you will see **StyleGuard** as one of the tabs on the Word ribbon:

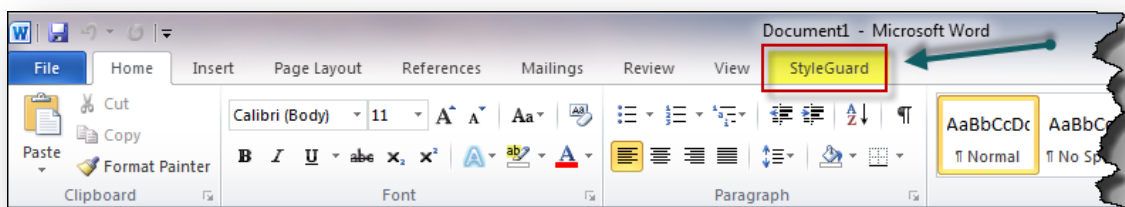


Figure: StyleGuard ribbon menu option

If this menu option is not available proceed to the section on [“Troubleshooting Installation Issues.”](#)

## Activating a StyleGuard Style Collection

The StyleGuard for Word installation includes a style collection from The Associated Press Stylebook. To use this style collection, you must activate it using the activation code that you received via email after purchasing a license from The Associated Press. If you need to purchase the AP StyleGuard, you can do so on [apstylebook.com](http://apstylebook.com). If you need help retrieving your invoice that contains the activation code, please contact AP Stylebook support. (See the section on [“Getting Help and Support”](#).)

Below illustrates what the StyleGuard ribbon will display before you activate the AP Stylebook collection:

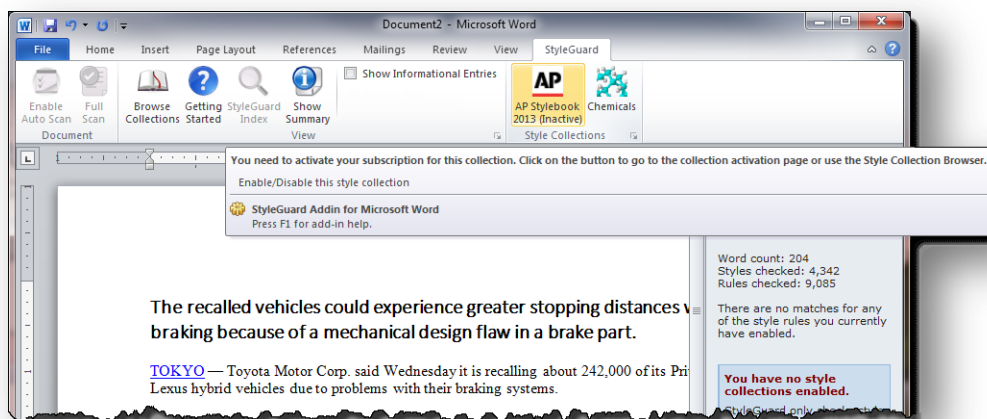


Figure: StyleGuard ribbon displaying an “inactive” AP Stylebook collection.

To activate the AP Stylebook collection:

- 1) Click on the  button to launch the **Browse Collection** window as shown below:

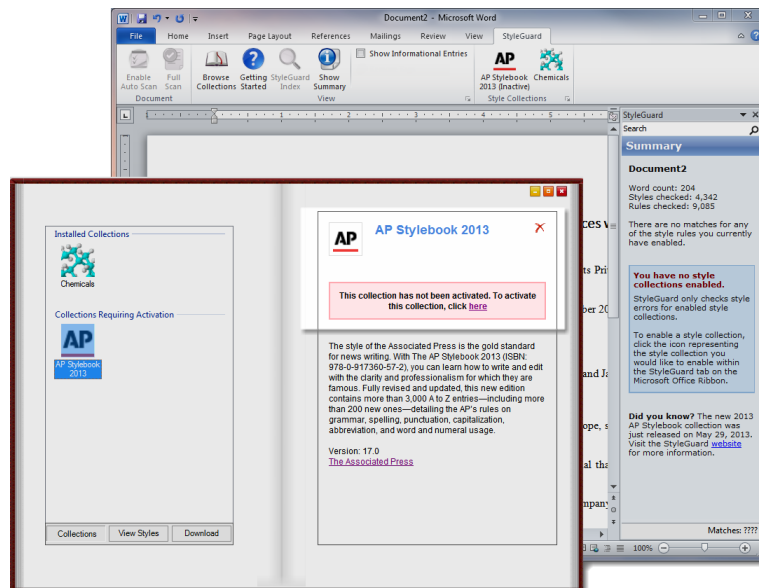


Figure: Browse collection window showing information of a selected style collection

In the figure above, The Associated Press (AP) Stylebook collection is shown as not activated.

- 2) Click on the here link on the right side of the displayed message to start the activation process.

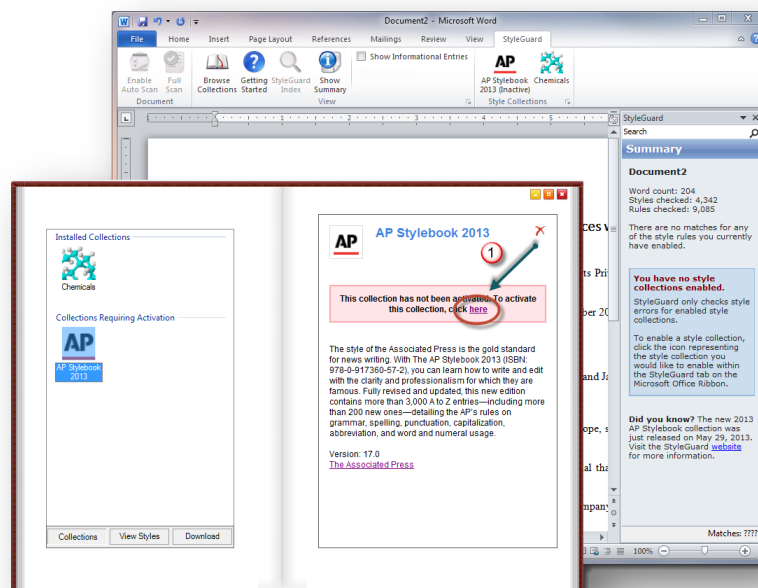


Figure: Location of the activation link for the AP Stylebook collection



3) An **Activate Collection** form is shown:

The screenshot shows a software window with two panes. The left pane has a tabbed interface with 'Collections' selected. It displays 'Installed Collections' (Chemicals, ISO Standards) and 'Collections Requiring Activation' (AP Stylebook 2013). The right pane is titled 'Activate Collection' and contains the following elements:

- 1. First Name: [Text Input Field]
- 2. Last Name: [Text Input Field]
- 3. Email: [Text Input Field]
- 4. Company: [Text Input Field]
- 5. Activation Key: [Text Input Field]
- ☒ Ok to receive marketing messages from Styleguard
- 6. [Activate Collection Button]

Figure: The Activate Collection Form

Fill in the information on the form:

1. First Name
2. Last Name
3. Valid Email Address – used only to contact you about updates, product information, etc.
4. (Optional) Company
5. Activation Key – this key is the one that you should have received via a purchase confirmation email from the AP Stylebook.
6. Click on the **Activate Collection** button

- 4) If the activation is successful, you should see a message indicating that your collection has been activated:

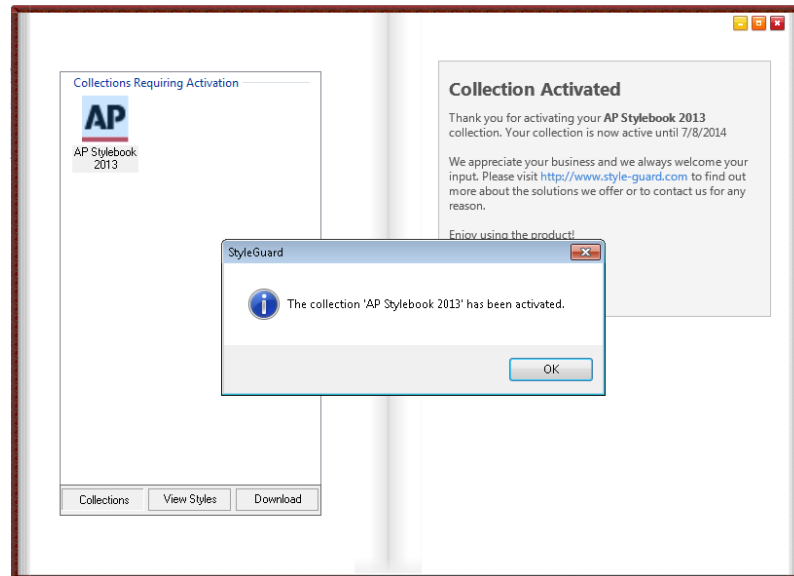


Figure: Screen showing the successful activation of a style collection

- 5) Upon clicking on the **OK** button on the message box, the Browse Collection screen will be updated to display the current subscription status of your activated style collections.

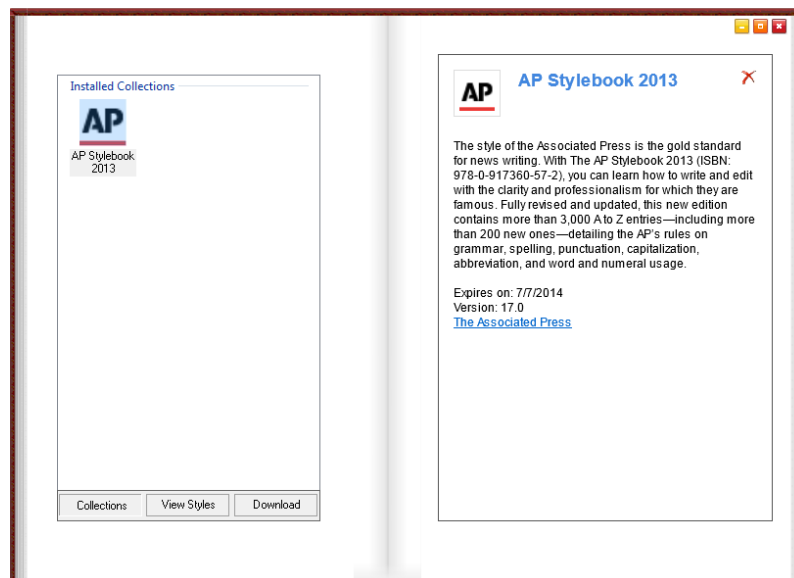


Figure: Browse Collection window after the successful activation of the AP Stylebook collection

The collection information on the right should now display the “expiration date” of the subscription for this style collection. The AP Stylebook collection also should have been moved from the “Collections Needing Activation” list to the “Installed Collections” list. Upon closing the Browse Collection window, the StyleGuard ribbon will now display the collection as “active” as shown below:

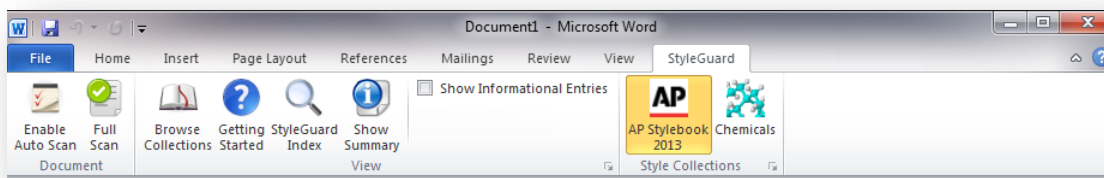


Figure: The StyleGuard ribbon with the AP Stylebook collection activated

You can now start using StyleGuard for Word while editing your documents. See the section on “Features and Operations Guide” for more details on how to use StyleGuard for Word.

## Features and Operations Guide

StyleGuard for Word is a Microsoft Office add-in working in conjunction with the Microsoft Word application to provide style checking features when you are writing or editing a document.

## StyleGuard Options and Functionality

StyleGuard provides users with the ability to review and evaluate content against a set of thousands of AP style rules. StyleGuard may propose corrections or suggestions, alternate forms of the same word or phrase according to the style preference defined by The Associated Press Stylebook. For more information about this style collection, see The Associated Press website, <http://www.apstylebook.com>.

## Scanning a Document

When creating a document in Word, StyleGuard for Word by default will automatically scan and report on the content you have typed. This mode is referred to as “Auto Scan” and the highlighted button on the far left in the Word ribbon shown below indicates that “Auto Scan” is active.

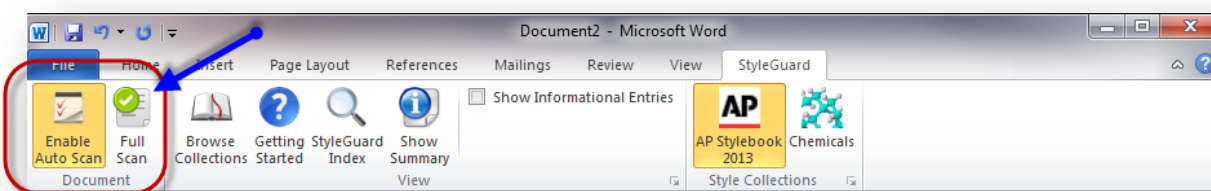


Figure: Display of the highlighted “Auto Scan” button in the StyleGuard ribbon

There are two scan-related buttons on the StyleGuard ribbon:

- **Enable Auto Scan** (on/off) – If on, StyleGuard automatically scans and checks the edited text in a document. If off, StyleGuard checks your text only when you request a full scan. Toggle on and off by clicking on the **Enable Auto Scan** button.

- **Full Scan** – Click on this button to request a full scan and check of the entire document once by StyleGuard. Otherwise StyleGuard will not check the text in a message you forward, for example, only the new content you write.

### Using “Full Scan”

**Full Scan** can be performed regardless whether **Enable Auto Scan** is on or off.

### Using “Full Scan” with “Enable Auto Scan” on

As discussed earlier, if **Enable Auto Scan** is on, documents are being checked while you are editing. When you are editing an existing document, only newly typed or edited text is scanned. This may be preferred when you have a large document and you do not want StyleGuard spending unnecessary time scanning text in the document that hasn’t been changed.

If, however, you would like the entire document you are editing to be scanned while **Enable Auto Scan** is on, simply click on the **Full Scan** button and StyleGuard will check the entire document, reporting any proposed changes or suggestions it discovers. This can be done any time when you want to have the entire document scanned.

### Using “Full Scan” with “Enable Auto Scan” off

If you prefer not to have StyleGuard check your text while you are writing or editing a document, you can turn **Enable Auto Scan** off by clicking on the button. This means that StyleGuard will not scan and check any new or modified text.

To have StyleGuard scan and check the document, you will need to click the **Full Scan** button. By clicking on the **Full Scan** button, you are basically “manually” requesting a full scan of the document. At any time, you can, of course, turn **Enable Auto Scan** on to enable automatic scanning of new or modified text.

### Reviewing Results of a StyleGuard Scan

When a scan of the current document is completed, the results will be presented in the StyleGuard task pane.

An example of a scan is shown below:

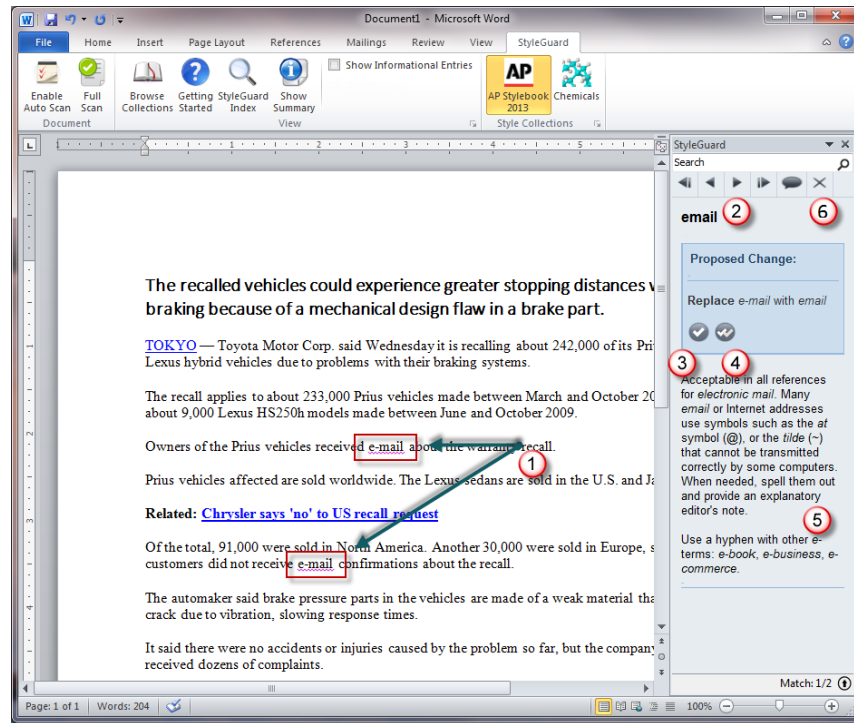





Figure: Results of the scan of a document

The document above contains four matches, indicated with the purple underlines, and including both an error with a proposed change and a suggestion indicating that there are alternative or preferred ways to express the word or phrase.

The illustration above indicates that the word “e-mail” as it was originally typed (see reference 1 in the illustration above) should be “email” without a hyphen to follow AP style. StyleGuard presents via the task pane on the right a proposed change and details about the change as shown in reference point 2 and 5, respectively, in the illustration above. You then have the following option(s):

- Apply the change to only the currently selected item  , labeled as reference point 3.
- Apply the change to all matches within the document  , labeled as reference point 4.
- Ignore the proposed change by using the  button on the task pane navigation bar, labeled as reference point 6.

The word “today” is underlined to show that StyleGuard has a suggestion about an alternate form. This appears because “show informational entries” is checked – StyleGuard offers information about words and phrases used, whether it identifies them as possible errors or not.

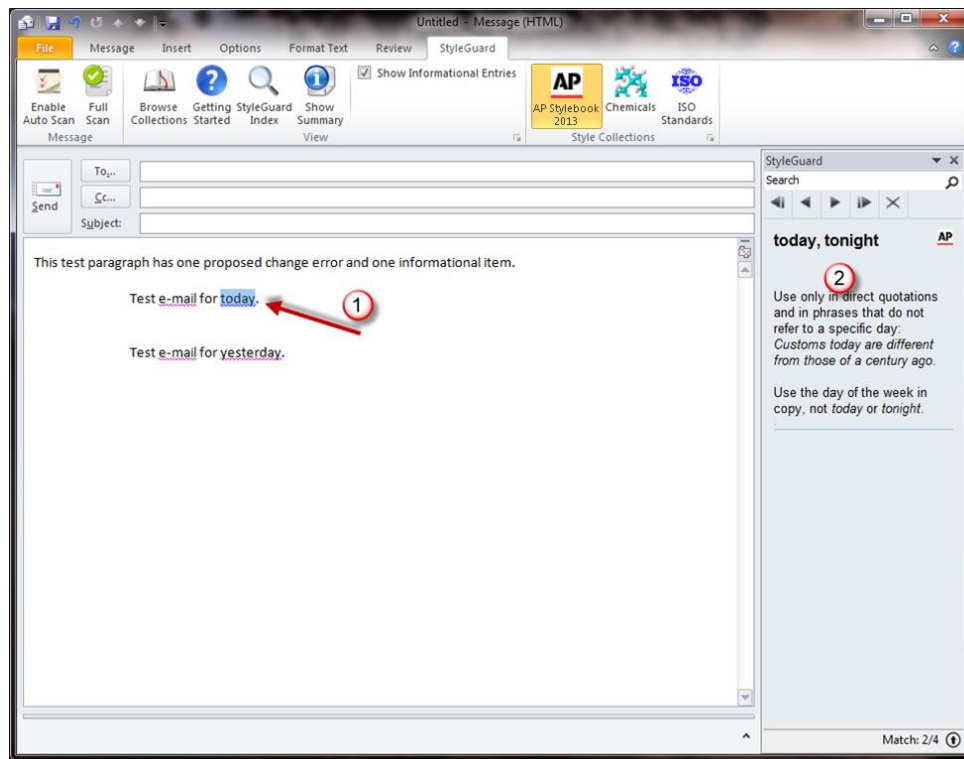


Figure: Suggestion shown for a matched scanned item

Note that StyleGuard is not presenting a “proposed change” option, just informational guidance on how the matched term should be used. See reference point 2 in the illustration above.

The only option available is to select the “X” button in the navigation bar to ignore this rule. StyleGuard will no longer display this informational entry until you restart Word. Alternatively, if you do nothing, that same informational entry will appear again next time you use that word or phrase in a checked document. You can simply move on to the next StyleGuard match.

## [View Panel](#)

StyleGuard for Word offers many functionalities in its “view” panel on the ribbon. You can browse and manage the style collections you have, learn how to get started using StyleGuard, view the A-Z index of the style entries, show the summary of the results generated by StyleGuard after a scan, and show all StyleGuard matches including those that are for informational purposes only. The following briefly discusses each of the buttons in the view menu.

## Browse Collection Button

To browse and manage your style collections, click on the **Browse Collection** button in the view menu.

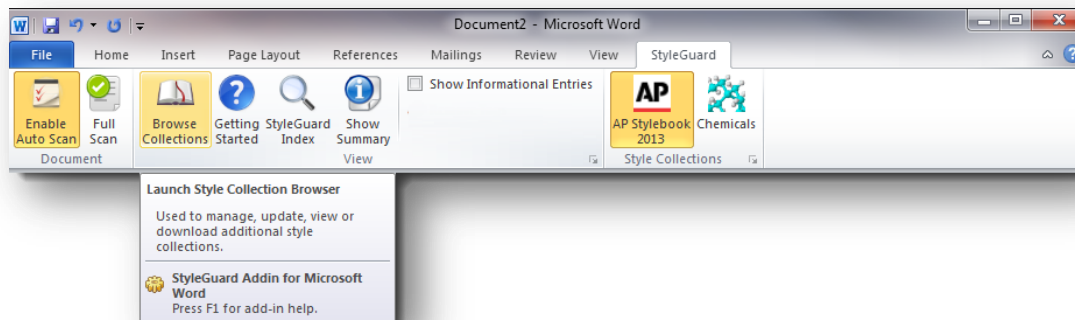


Figure: Browse Collection button

When the **Browse Collection** button is clicked, it launches the Browse Collection window, showing you what style collections you have installed.

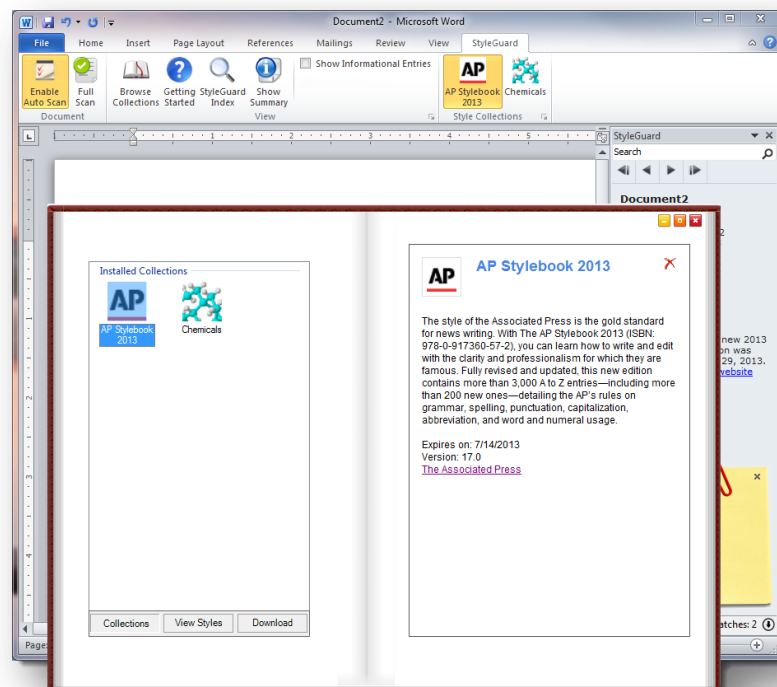


Figure: Browse Collection window

The Browse Collection window allows you to:

- View the style collections you have installed and their expiration dates.

- Review style entries within a selected collection.
- Download, install and, if necessary, activate additional style collections.
- Update and delete existing style collections.

**Important Note:** The Browse Collection window is also used to manage activation of your style collections.

### Getting Started Button

The **Getting Started** button shows a brief summary of how to use StyleGuard in the StyleGuard task pane to the right of the document being edited.

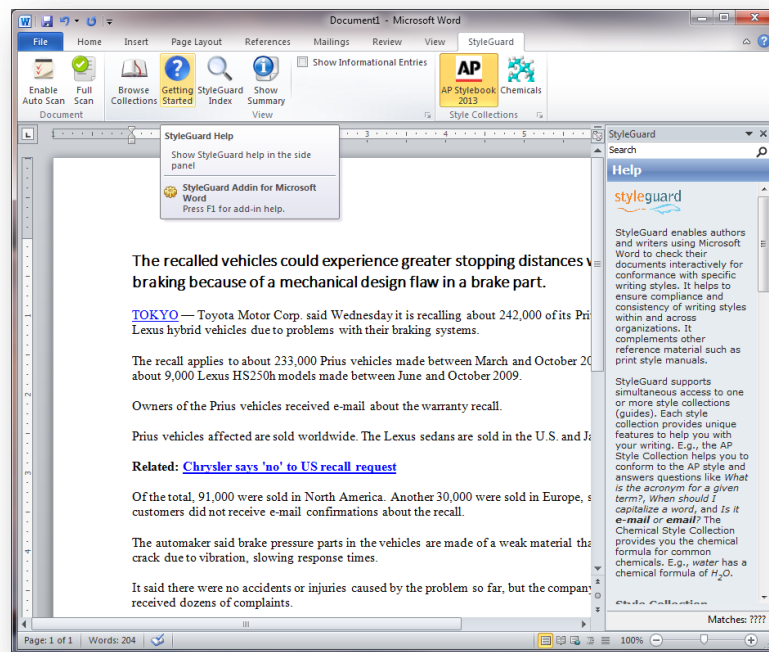


Figure: Getting Started button and its associated content shown in the StyleGuard task pane

The content in the StyleGuard task pane includes a link to the StyleGuard website for more information and additional help.

### StyleGuard Index Button

When a style collection is active – as indicated by the highlighted AP Stylebook collection icon – you can refer to the content in that collection by clicking the “StyleGuard Index” button. When the index button is clicked, the StyleGuard task pane to the right of document shows an A-Z index for the active style collection. You can click on any letter of the alphabet to browse – for example, click on the letter **B** to show all the style entries starting with the letter **B**. Furthermore, you can use the search box to search for a particular entry. When you type in the search box, autocomplete will show you entries that start with the word you type. For example, you can type “French” to bring up the list of entries that start with



the word “French,” such as “French Bread.” Typing in a word and pressing the **Enter** key will provide you with a list of style entries in the AP Stylebook collection that mention the word. For example, typing “avoid” and pressing the **Enter** key shows entries that contain “avoid” like “abbreviations and acronyms,” “academic degrees,” etc.

Below is an example of a display in the StyleGuard task pane after the “StyleGuard Index” button is clicked:

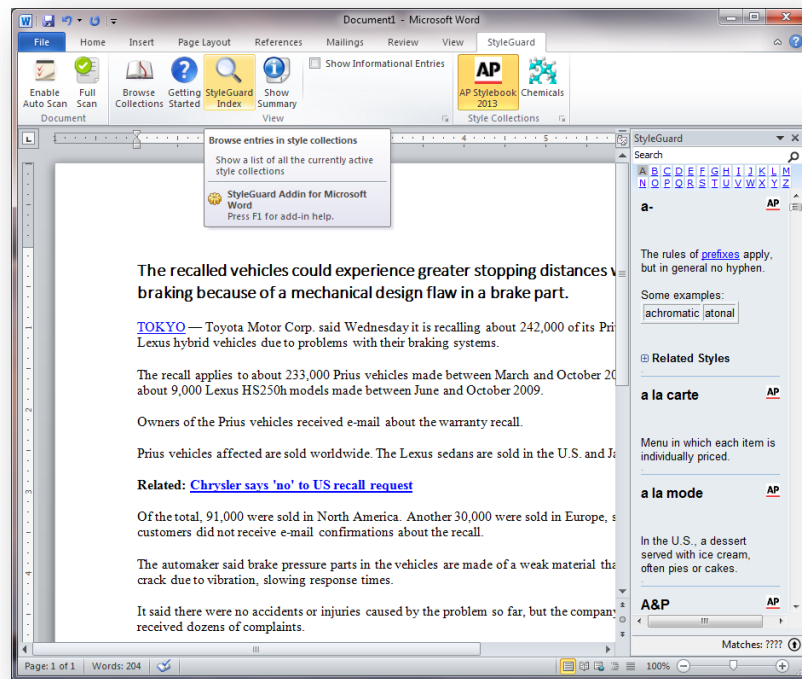


Figure: StyleGuard Index button and its associated content shown in the StyleGuard task pane

### Show Summary Button

Clicking on the **Show Summary** button shows the results of the scan last performed by StyleGuard. If StyleGuard found any matches in the document, you will be presented with the navigation buttons to navigate through the list of matches: only potential issues are shown if **Show Informational Entries** (explained later) is off or both potential issues and informational entries are shown if **Show Informational Entries** is on.

The figure below shows a typical display in the StyleGuard task pane after the **Show Summary** button is clicked:

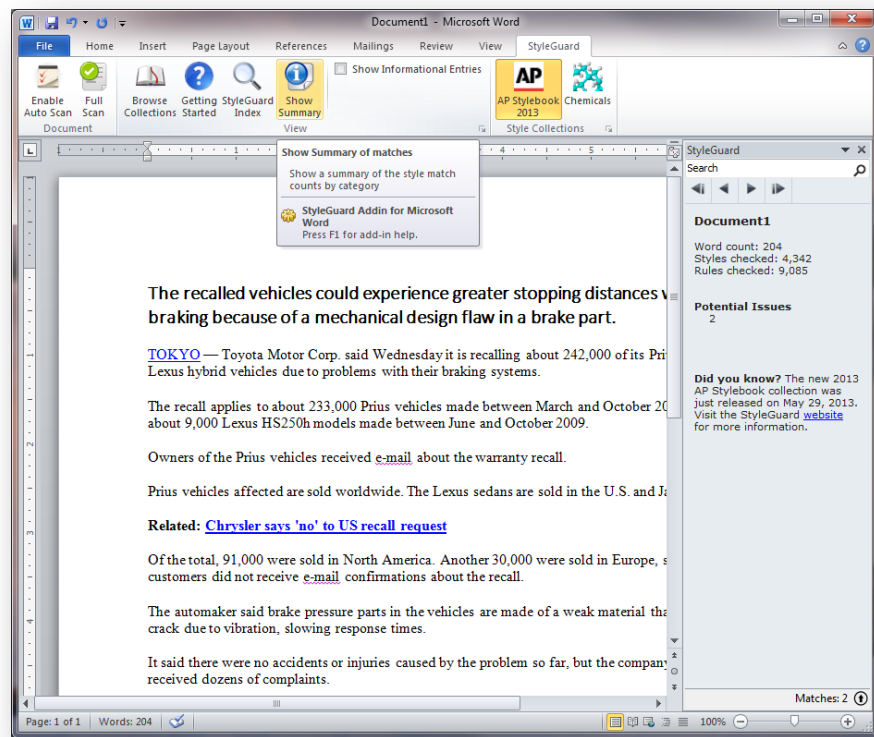


Figure: Show Summary button and its associated content shown in the StyleGuard task pane

As the result of clicking the “Show Summary” button, you will be shown information about the current document, the style entries and rules enabled and the current state of the scan. Note that if **Enable Auto Scan** is not on, this information only represents results from the last full scan. If changes have been made since the last full scan, you must click on the **Full Scan** button in the StyleGuard ribbon to get the most up-to-date information.

### “Show Informational Entries” Scan Option Setting

While using the scan feature of StyleGuard, you can decide how much information you want StyleGuard to display. By default, StyleGuard will scan and show you what are referred to as “potential errors.” These are words or phrases within your document that are considered incorrect according to StyleGuard’s automated AP style rules.

If you want StyleGuard to show you additional information about the words or phrases in your document, you can enable the **Show Informational Entries** setting as shown as reference point 1 in the illustration below:

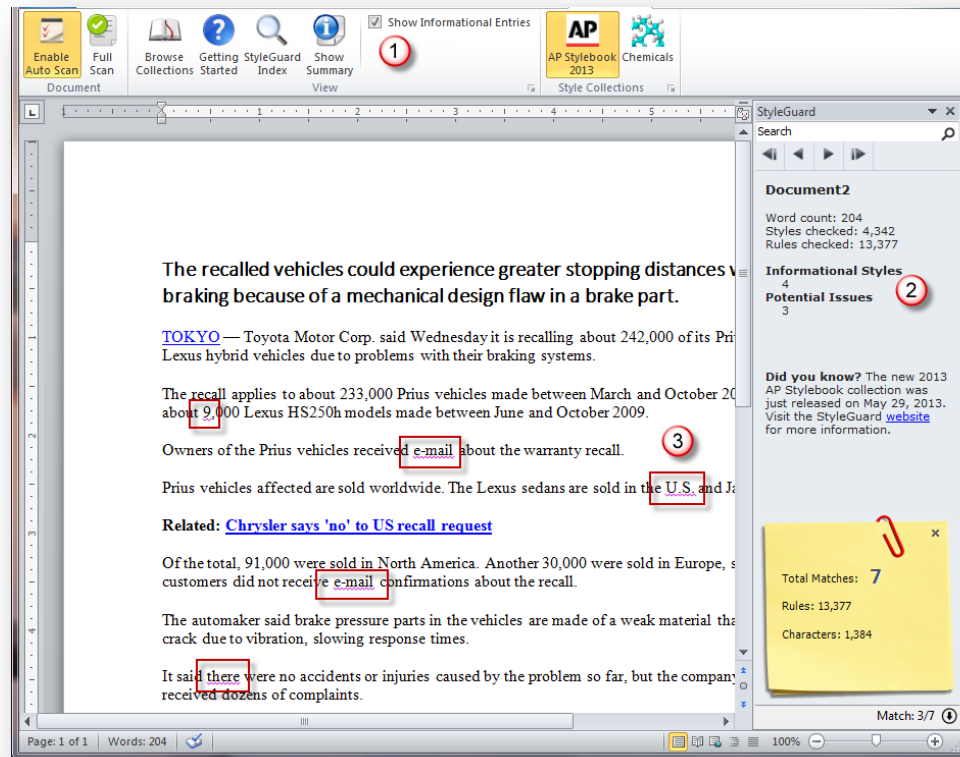


Figure: Illustration of “Show Informational Entries” and document scanning results

When the **Show Informational Entries** option is checked, StyleGuard will include matches not only for potential errors but also for other words or phrases mentioned in the AP Stylebook collection. In the summary displayed in the StyleGuard task pane above, StyleGuard found four informational entries and three potential issues (see reference point 2). These informational items are tagged in the document the same way as the potential issues – with a purple squiggly underline.

Unlike potential issues, informational matches usually do not require correction. When you click on each “informational” match, it will display additional information about the word or phrase in the StyleGuard task pane, taken from the matching AP Stylebook entry.

For example, the match above denoted by reference point 3 for “U.S.” is an “informational” item. The illustration below shows the StyleGuard task pane when this item is selected:

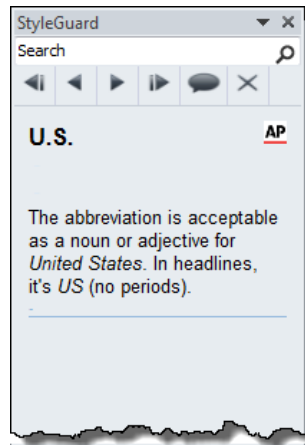


Figure: Display of the informational entry “U.S.” in the StyleGuard task pane

This entry differs from the potential errors in that there is no proposed change presented. Instead, only information on how to use this term is displayed. If you wish StyleGuard to stop highlighting this particular match, you can click on the **Ignore All** button (✕) in the navigation toolbar. StyleGuard will no longer display this match until you restart Word.

## Using the StyleGuard Task Pane

The StyleGuard task pane provides additional functionality that can be used to view and navigate through the results. The typical result of a scan is shown below with explanation of the options available:







Figure: StyleGuard task pane showing status note and navigation bar

## Features

### Result and Progress Indicators

The StyleGuard task pane includes progress and results indicators that keep you updated on the status of a scan. (Refer to the section on “Scan Features” for an explanation of the various scan capabilities available.)

Reference point 1 in the above illustration shows a yellow status note that automatically pops up when a scan is in progress. You can hide or unhide the status note by clicking on the “down”  or “up”  button located in the lower right corner, see reference point 2. The status note can also be closed using the “close”  button. If you hide the status note, it will not be displayed again during a scan until you activate it again using the  button.





The following display shows the status note and the status bar while StyleGuard is processing a document. Note that you can continue to work on your document while StyleGuard is scanning.



Figure: Display of the status note and status bar while StyleGuard is scanning


### Results Navigation Bar

Results from the scan of a document might include many matches. These matches can be navigated from the first to the last or the nearest one based on the current location of the cursor in the document. The navigation bar uses the control display options as follows:

-  Go to the first match.
-  Go to the previous or nearest match based on the current location of the cursor in the document.
-  Go to the next or nearest match based on the current location of the cursor in the document.
-  Go to the last match.

The next and previous match buttons can be used to navigate through the list of matched items as well as to find the nearest match based on the current location of the cursor in the document. When these navigation buttons are clicked, StyleGuard will select and highlight the appropriate match based on your navigation choice.

### [Ignoring a Scan Rule](#)

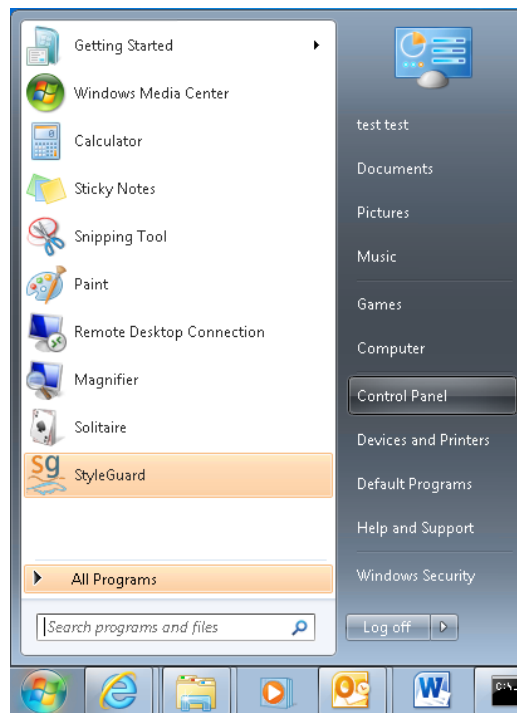
Another option located on the navigation bar is the **Ignore Rule** button represented by the  symbol. This button is used when you wish to have StyleGuard stop detecting a match for a given word or phrase.

It is important to note that the “ignore” will apply to all similar matches in all the documents you edit, not just the current match. The “ignore” is in effect until you restart Word.

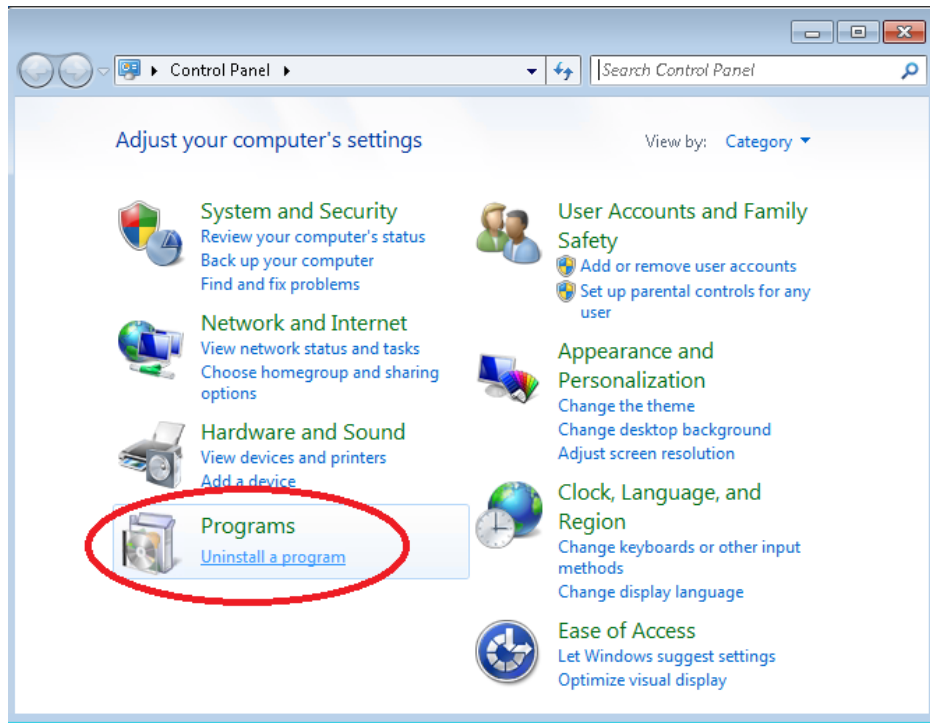
## [Uninstalling StyleGuard for Word](#)

To uninstall StyleGuard for Word, follow the steps below:

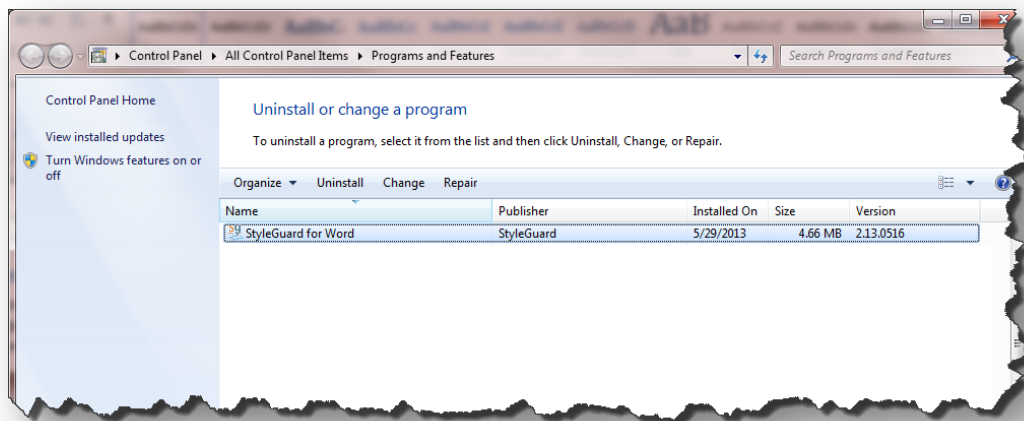
1. Click on the **Start** button  and select **Control Panel**



2. Under **Programs**, click on **Uninstall a program**



3. Select **StyleGuard for Word** and click on **Uninstall**



## Troubleshooting Installation Issues

The following section details how to troubleshoot common installation issues or issues related to using StyleGuard for Word. If you are unable to get your issues resolved, go to the “**Error! Reference source not found.**” section for the appropriate contact information.

## Manually Enabling or Disabling StyleGuard for Word

There may be situations either just after installation of StyleGuard for Word or while using StyleGuard for Word when you might want to permanently enable or disable it as a Word Add-In. Use the following steps to perform either action.

- 1) In Word, click on the **File** menu and select the **Options** menu choice.

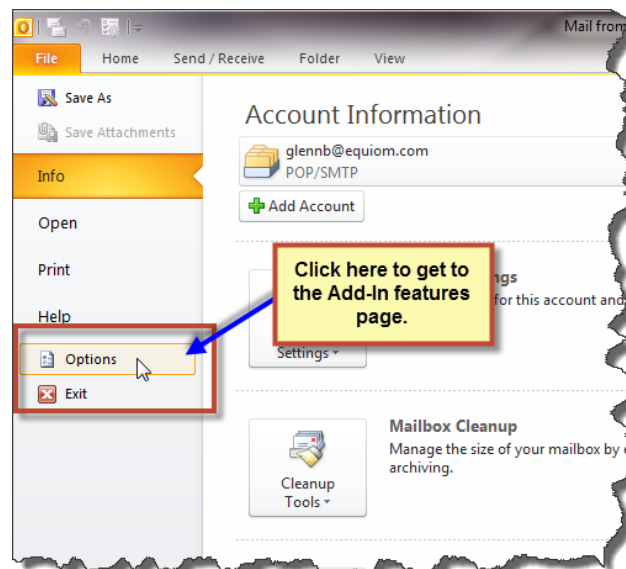


Figure: Accessing the options page in Word 2010

- 2) Click on the menu item **Add-Ins** to display the Microsoft Word Add-Ins panel.

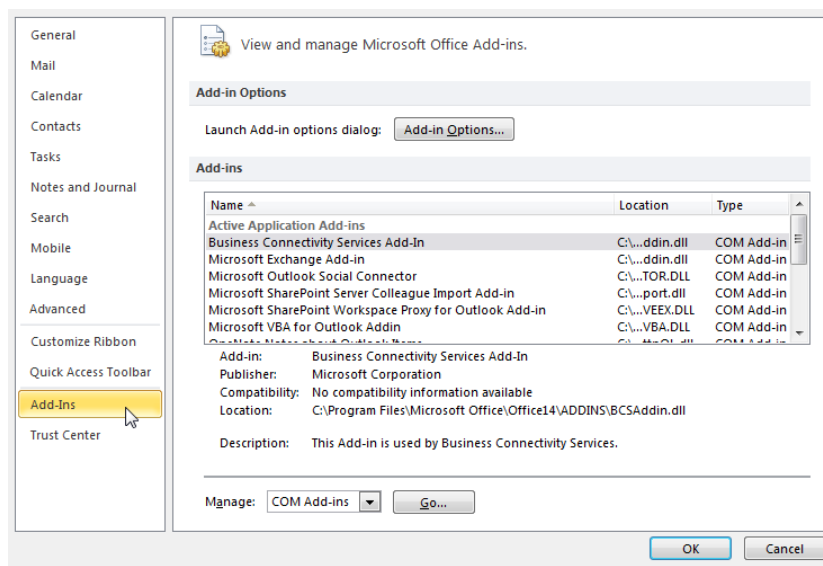
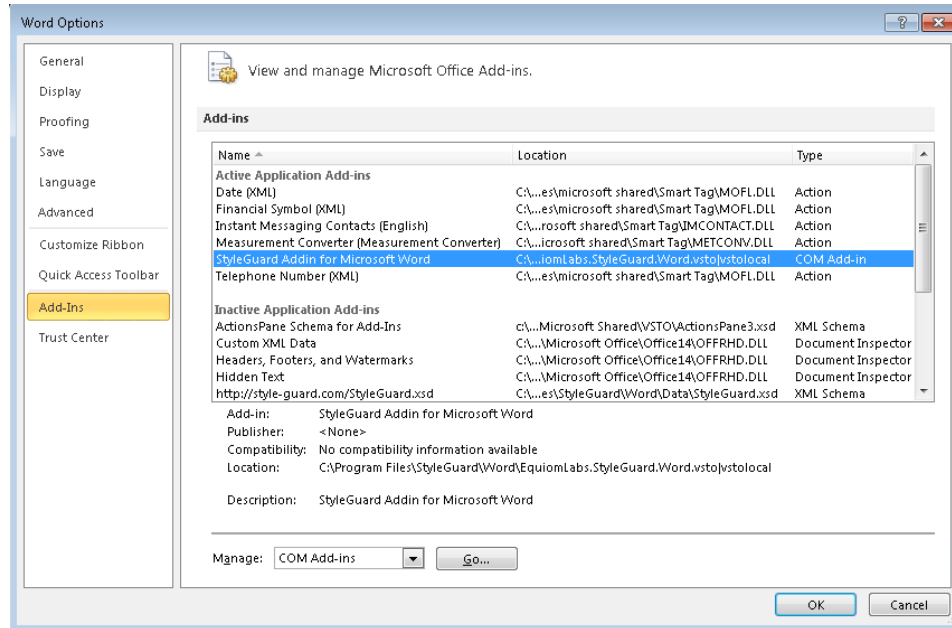


Figure: Add-Ins options menu and panel display



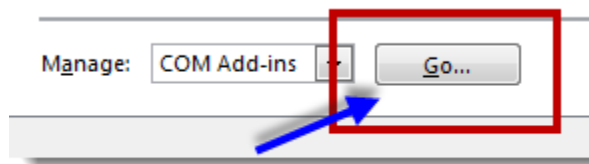
- 3) If StyleGuard for Word was successfully installed, you can find the entry in the “Active Application Add-ins” section under “StyleGuard Addin for Microsoft Word” as illustrated below:



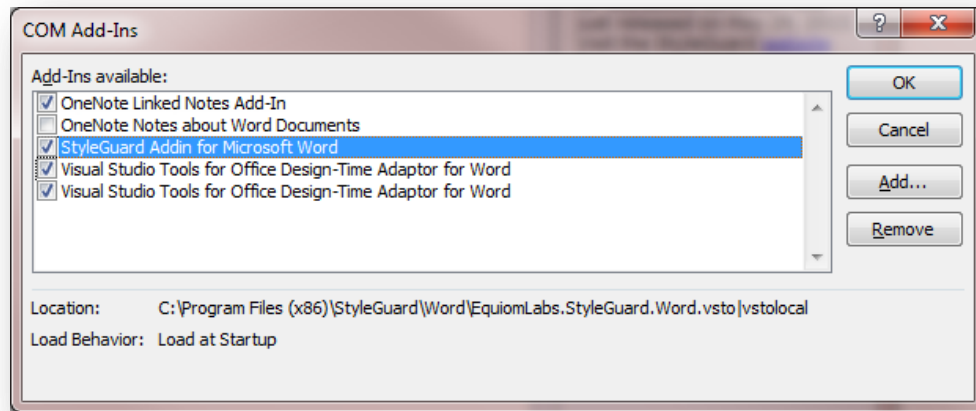
If you want to activate StyleGuard for Word, no additional action is required. If you want to disable StyleGuard for Word, continue with the steps below accordingly.

**Note:** If the installation of StyleGuard for Word was not successful, you will find it listed under the “Inactive Application Add-Ins” section. To enable StyleGuard for Word, continue to follow the steps below.

- 4) To enable or disable StyleGuard for Word, access the “Manage COM Add-ins” dialog by clicking on the **Go...** button at the bottom of the window.

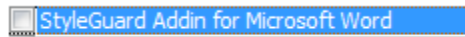


5) In the “COM Add-Ins” dialog, locate “StyleGuard Addin for Microsoft Word.”

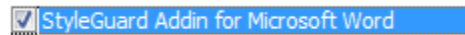


Follow the instructions below to either enable or disable StyleGuard for Word:

- a. To **Disable** StyleGuard for Word, make sure the checkbox is **unchecked**.



- b. To **Enable** StyleGuard for Word, make sure the checkbox is **checked**



Then click the “OK” button to complete the operation.

### Verifying that StyleGuard for Word is Enabled

To verify that StyleGuard for Word is activated, start Word and create a new document. If StyleGuard for Word is active, StyleGuard should be shown as one of the tabs on the Word ribbon located above the document.

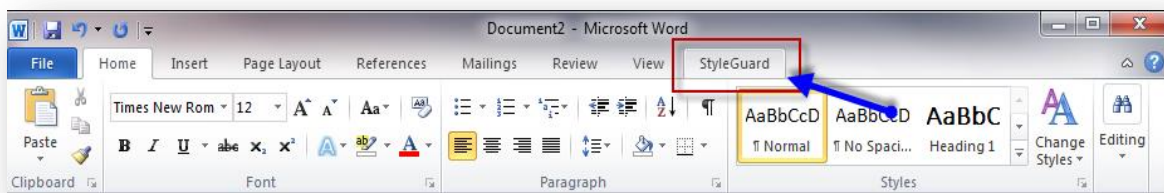


Figure: StyleGuard as one of the tabs on the Word ribbon after StyleGuard for Word was successfully enabled

## Troubleshooting Tips While Enabling StyleGuard for Word

To determine why the StyleGuard tab might not appear as one of the tabs on the Word ribbon when editing a document:

- 1) If you have used the steps above to verify and enable StyleGuard for Word, repeat steps 1-3 above to verify that StyleGuard for Word is displayed in the “Active Application Add-ins” section.
  - a. If “Yes” – restart Word and verify again.
  - b. If “No” – look at the “Add-Ins” section and locate StyleGuard for Word entry. If StyleGuard for Word is in:
    - i. The “Inactive Application Add-ins” section, try enabling it again following the instructions from steps 4-5 above.
    - ii. The “Disabled Application Add-ins” section, do the following:
      1. Follow the steps 4-5 in the section above and attempt to re-enable StyleGuard for Word again. Then check to see if the Add-In shows up in the “Active” listing.
      2. If you are unable to **Enable** StyleGuard for Word, contact StyleGuard support for additional assistance. (See the section on “[Getting Help and Support](#)”.)

## Getting Help and Support

**AP Stylebook Support** – Please contact AP Stylebook support if you have questions about purchasing and renewing StyleGuard for Word, or if you have questions about AP Stylebook entries.

Email: [help@apstylebook.com](mailto:help@apstylebook.com)

Website: <https://www.apstylebook.com/?do=help>

**StyleGuard Customer Support** – Please contact StyleGuard customer support if you have questions about installing and using StyleGuard for Word, or if you have suggestions on software features and improvements.

Email: [support@style-guard.com](mailto:support@style-guard.com)

Website: <http://www.style-guard.com>

FAQ: <https://style-guard.com/support/faq.aspx>